



Corporate profile

Top Message



The world situation and economic environment surrounding us are changing every day, including globalization of society, declining birthrate and aging population, response to sustainability, and rapid evolution of digital technologies, and people's needs and values have become more diversified than ever.

Value expected in our business areas is also changing, including the merging of real space and AI digital technology, mixed-use space, and the introduction of circular design for a recycling-oriented society.

Our corporate statement "Design Everything" reflects our belief that design is not simply shapes, colors, and patterns, but is about redefining objects fundamentally. Our designs cover people's happiness, fresh air, relationship, culture, and even sustainability, and we aim to realize solutions exceeding customers' expectations.

Comprehensively dealing with all kinds of space such as houses, offices, hotels, and commercial facilities, we have created new value through crossover design skills and reliable technological capabilities combined with knowledge and experience that we have cultivated in each business area. I believe our mission is to make the most of this strength and contribute to creating a satisfying life and an attractive society.

By designing various spaces, Mitsui Designtec will contribute to urban development for changing the future and strive for further growth through the unified efforts of all of its employees to serve as a leading space-creating company that provides the value of rich experience for all "dwelling people," "working people," and "resting people."

President and Representative Director **Yusuke Muramoto**

Statement

Design Everything

Design is more than just surface elements like shape and color. It is also about finding solutions by capturing the true essence of the object.

We treat everything in this world as a design target for spreading happiness and joy.

Creating a new atmosphere, a new relationship, and a new culture. Our design encompasses all of these and more.

Through design, we pave the way for a new age to come.

Mission

Creating the future for people and their communities

Mitsui Designtec creates affluent lifestyles and attractive society by creating spaces and environments with Crossover Design and technology.

We design space. We design society.

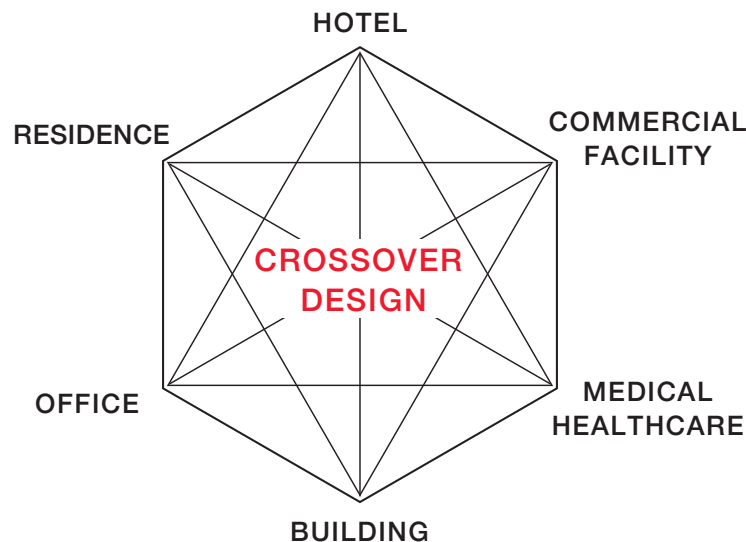
Space design is about designing a better society,
i.e., a better work and life environment.

Our strengths

- **1 crossover design** Create space beyond imagination
- **2 one-stop solution** Offer full solutions to space creation
- **3 space for life** Deliver new life value

■ **1 crossover design** Create space beyond imagination

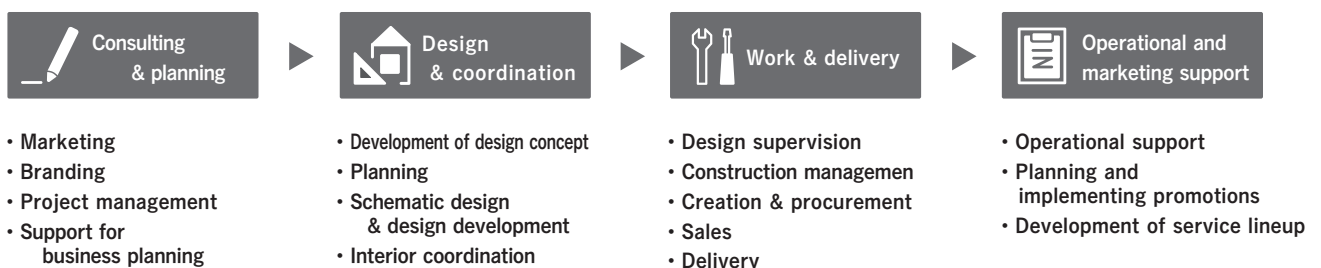
Based on knowhow we developed through works on spaces in various fields,
and by putting it together in our own unique way, we create space beyond imagination.



■ **2 one-stop solution** Offer full solutions to space creation

It is not just space that we design.

Our space solutions span from consulting through operations after completion of construction.





3 space for life

Deliver new life value

We bring new value to your life ahead of the times by closely working with both personal and business customers to create space for work, relaxation, and personal life.



RESIDENCE

Residential space

Private residence, Tokyo (13 years since construction)

We respond to any consultation about living space from customers to realize the ideal spaces for residents. A good partner of our customers, we provide a wide range of support extending to space design, renovation and interior coordination enabling them to begin new lifestyles in comfort and with ease.

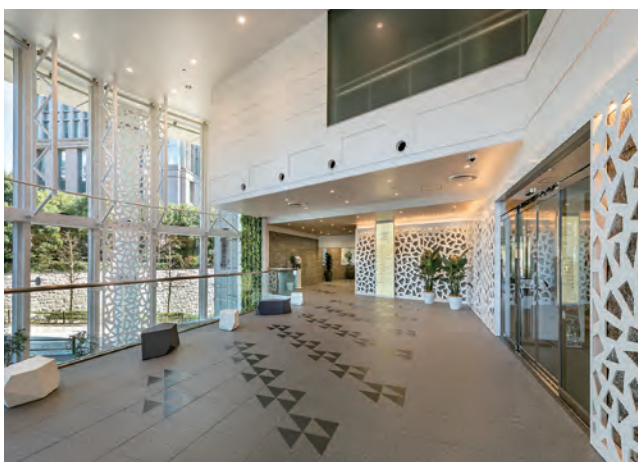


OFFICE

Office space

Mitsui Sumitomo Insurance Company, Limited en terrace

Office space we create unleashes the full potential of workers. Office space is one of the key business resources for companies. Our team of professionals with rich experience and expertise offer full support for creating office environments that boost productivity.



BUILDING

Building space

Aoyama Yasuda Building

Let us help you improve the value of your important assets, buildings. You can enhance the asset value of your buildings and differentiate them from competitors while taking into account future renovations, change of use, and interior redesign.

HOTEL

Hotel space

Rusutsu Resort Hotel & Convention

Our comprehensive solutions range from hotels through accommodation and hospitality facilities. We are here to help you create unique "beloved" accommodation facilities that attract repeat visitors and improve occupancy rates, focusing on the viewpoints of both users and operators of space.



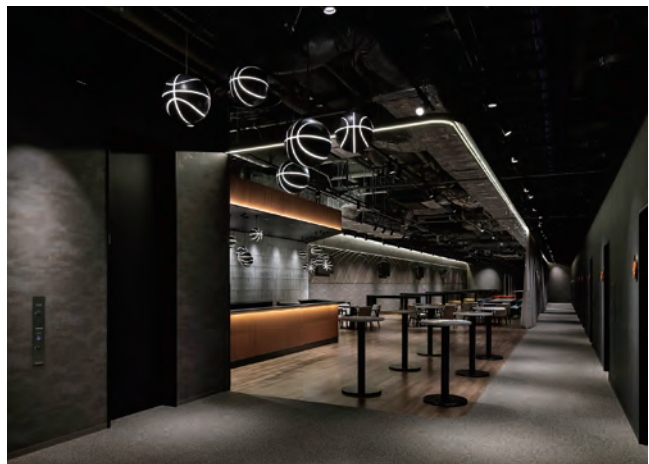
COMMERCIAL FACILITY

Commercial space

LaLa arena TOKYO-BAY

Our experience spans across various commercial facilities from retail outlets and shopping malls to highway rest areas (Service Areas) and sports facilities.

With our strong creativity and cost management knowhow, we offer comprehensive solutions for creating commercial spaces from interior design through project follow-up.



MEDICAL HEALTHCARE

Healthcare & welfare space

Cross Wave Shonan Fujisawa Blood Donation Room

With track record of designing and constructing medical institutions, nursing homes for the elderly, and childcare facilities, we create facilities chosen for functionality and hospitality. We support you from planning for opening a new facility through renovation and reform.



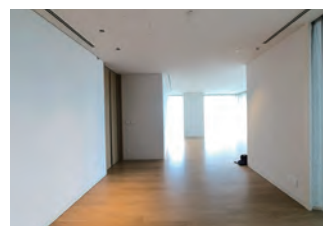
Services for creating living space



三井のリフォーム



After



Before

We offer high-end renovation services for condominiums, drawing on our expertise in designing premium environments, such as offices, hotels, and model units for newly built condominiums.

Mitsui Reform Website

<https://www.mitsui-reform.com/>



Information service about living space

Interior website

三井デザインテックのインテリア情報サイト

Interior Village

Interior Village

Interior Village is a website that provides you with a fun way to choose your interior design. Visit the website to find information about interior fairs and events, make reservations, and read tips on how to choose your interior design. It's the right place for you if you are interested in interior and want to design your own interior. We help you choose the best interior for you.

Interior coupon service



iLMiO

Find great deals that our partners including about 80 brands and 400 shops throughout Japan offer at their physical and online stores. The coupons can be applied to your purchases of small interior goods and gifts. iLMiO means "my favorite" in Italian.

Interior coordination salon



LIVE LABO

At LIVE LABO, you can find everything you need for your interior design. In a relaxed, exclusive reservation-only environment, your dedicated professional interior coordinator helps you choose the best interior design. We support you to choose from a broad range of samples and catalogs of curtains, furniture, lighting, and other interior products.

Information service about office space

Offichè

Offiche

Offiche is coined after "office" and "che," an Italian interjection used in combination with a positive adjective to create a sentence meaning "how xx!" Today's ways of working are diversifying. Offiche provides the latest topics on office environments and information that enriches your business life from the standpoint that time we spend working is a part of our life.



About Mitsui Designtec

(As of April 1, 2025)

Name	Mitsui Designtec Co.,Ltd.	
Address	GINZA 6 -CHOME-SQUARE, 6-17-1, Ginza, Chuo-ku, Tokyo	
Capital	500 million yen	
Established	April 1, 1980	
Shareholder	Mitsui Fudosan Co., Ltd.	
Revenue	57,800 million yen (FY2024 performance)	
Number of employees	868(as of April 1, 2025)	
Main bank	Sumitomo Mitsui Banking Corporation	
Main affiliations	Japan Interior Industry Association, Japan Interior Architects/Designers' Association, Remodeling Promotion Committee for Condominium, Housing Renovation Promoting Council, Tokyo Chamber of Commerce and Industry, Tosokyo	
Authorization/license	<ul style="list-style-type: none">• Construction business license by Minister of Land, Infrastructure, Transport and Tourism (specific-4) No. 9374• Registered architect office: Registration number 64013 by Governor of Tokyo (head office)• Real estate brokerage license by Governor of Tokyo (8) 62626	
Directors & auditors (* indicates part-time)	Chairman of the Board	Atsushi Hinokida
	President and Representative Director	Yusuke Muramoto
	Director	Yuki Tamaru
	Director	Shigeo Shinagawa
	Director	Tetsuji Kawakami
	Director	Takaaki Suzuki
	Director	Toru Kamura
	Director	Taro Suzuki
	Corporate Auditor	Kenji Oki
	Corporate Auditor	Shinji Kato(※)
Executive Officer	President and Chief Executive Officer	Yusuke Muramoto
	Senior Executive Managing Officers	Yuki Tamaru
	Executive Managing Officer	Shigeo Shinagawa
	Executive Officer	Tetsuji Kawakami
	Executive Officer	Takaaki Suzuki
	Executive Officer	Toshiichi Tsurumi
	Executive Officer	Eiji Sano
	Executive Officer	Shoji Emoto
	Executive Officer	Katsuyoshi Takaba
	Executive Officer	Shinya Takagi
	Executive Officer	Mitsuo Kato
	Executive Officer	Shigeharu Yamashita
	Fellow	Shinichi Mitsuki